



The *new standard*  
in digital pathology  
and precision surgery.

Optiscan Imaging Ltd.  
(ASX:OIL)

Optiscan Site Tour – Analyst Presentation  
10 April 2025

This presentation has been approved by the Board of Optiscan for market release.

# Notice

This presentation has been prepared by Optiscan Imaging Limited (OIL or the Company) 10 April 2025, and approved for market release by the Board of Optiscan.

The information in this presentation is of a general nature and does not purport to be complete. The presentation does not contain all of the information which a prospective investor may require in evaluating a possible investment in OIL or that would be required in a prospectus or product disclosure statement prepared in accordance with the requirements of the Corporations Act 2001 (Cth). No representation or warranty, express or implied, is made as to the fairness, accuracy, completeness or correctness of the information, opinions and conclusions contained in this presentation. Neither OIL, nor any of its officers, employees, officers, agents, consultants or advisers are under any obligation to update any information subsequent to the issue of this presentation.

## **Future Performance**

This presentation contains certain forward-looking statements and unaudited information including regarding the Company's future growth plans, strategies, products, operating performance, milestones, guidance, opinions, estimates, targets, goals, forecasts, earnings and financial position (Forward Looking Statements). The Forward Looking Statements, in this presentation are based on assumptions and contingencies which are subject to change without notice. Actual results and achievements could be significantly different from those expressed in or implied by this presentation. The Forward Looking Statements involve subjective judgements and assumptions as to future events which may or may not be correct and should not be relied upon as an indication or guarantee of future performance. No representation, warranty or assurance (express or implied) is given or made in relation to the achievement of any Forward Looking Statement by any person (including OIL).

Subject to any continuing obligations under applicable law, OIL disclaims any obligation or undertaking to provide any updates or revisions to any Forward Looking Statement in this presentation to reflect any change in expectations in relation to any such Forward Looking Statement or any change in events, conditions or circumstances on which any such statement is based. Nothing in this presentation will create an implication that there has been no change in the affairs of OIL since the date of this presentation.

## **Past performance**

The operating and historical financial information in this presentation are not an indication of OIL's views on its future performance or condition. Actual results could differ materially from those referred to in this presentation. Past performance of OIL is not and cannot be relied upon as an indicator of (and provides no guidance as to) future performance.

## **Not an offer or financial product advice**

This presentation is not a prospectus, product disclosure statement or other offering document under Australian law (and will not be lodged with ASIC) or any other law. This presentation does not satisfy the disclosure requirements for a disclosure document required under the Corporations Act. This presentation is for information purposes only and is not an invitation or offer of securities for subscription, purchase or sale in any jurisdiction. This presentation does not constitute investment or financial product advice (nor tax, accounting or legal advice) or any recommendation to acquire securities and does not and will not form any part of any contract for acquisition of securities. Each recipient of this presentation should make its own enquiries and investigations regarding all information in this presentation (including, without limitation, the assumptions, uncertainties and contingencies which may affect the future operations of OIL and the impact that different future outcomes may have on OIL).

This presentation has been prepared without taking into account any person's individual investment objectives, financial situation or particular needs. Before making an investment decision, prospective investors should consider the appropriateness of the information having regard to their own investment objectives, financial situation and needs and seek legal, accounting and taxation advice appropriate to their jurisdiction. An investment in OIL's shares is subject to known and unknown risks, some of which are beyond the control of OIL. OIL does not guarantee any particular rate of return or the performance of OIL.

## **Liability**

Neither OIL nor any of its officers, employees, officers, agents, consultants or advisers owe any duty (whether in equity, in tort or otherwise) to any investor in connection with this presentation nor do they have any liability (including, without limitation, in negligence) for any loss or damage arising from or in connection with this presentation, except to the extent that such liability may not lawfully be excluded.

To the maximum extent permitted by law, you acknowledge and agree that by taking part in this presentation you will not bring or institute any legal proceedings in contract, in tort, for breach of statutory duty or otherwise against OIL or any of its officers, employees, officers, agents, consultants or advisers in respect of any information provided to it in or in connection with this presentation.

# Optiscan at a Glance

A global medical technology company leading the transformation of digital pathology and precision surgery



ASX: OIL  
1997



Melbourne  
Headquarters



\$110m  
Market Cap



Patent  
Protected



Proven  
Technology



Validated  
Products



Team  
Agile



2,350 m<sup>2</sup>  
Office & Plant



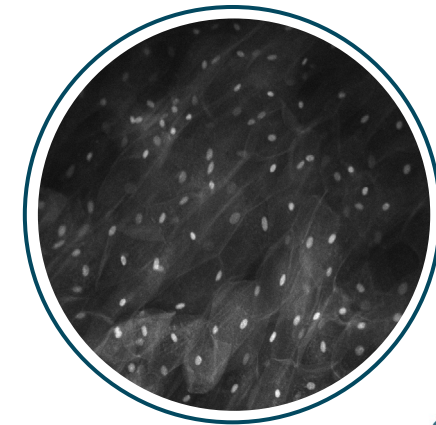
QMS  
Certification



Minnesota  
Commercial Hub

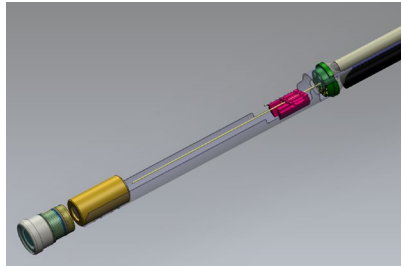
## Highest-Resolution Sub-Micron Live Microscopic Imaging Platform

- **Best in class** fluorescence-based **confocal laser endomicroscopy**
- **Single optical fibre** distal end scanning suitable for high precision clinical interventions
- Fluorescence intensity creates **real-time digital microscopic images**
- Moving lenses create variable focal planes for **imaging depth** up to 400  $\mu\text{m}$
- Images are up to **1000x real magnification** with subcellular level resolution of **0.55  $\mu\text{m}$**



# Best in Class - Unparalleled Precision

## Technology



Optiscan – Single Fibre

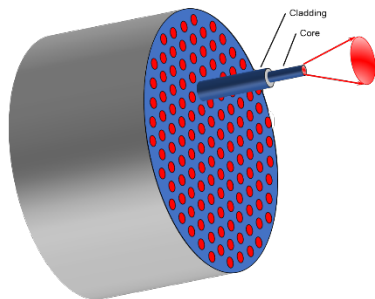
## Image – Mouse Ilium



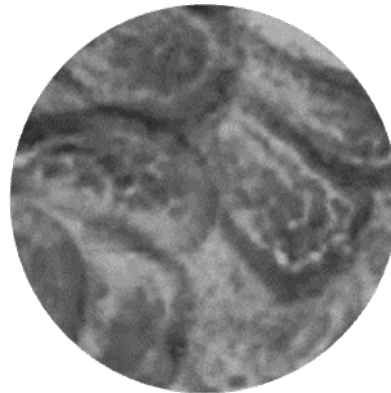
20 µm

## Comparison

- ✓ Single fibre
- ✓ Whole imaging plane is scanned
- ✓ No blank spots, all critical clinical information displayed
- ✓ No image processing, stitching or mosaicking required
- ✓ Sub-micron optical resolution with optimal image sampling
- ✓ Z-stack capability enables optical sectioning depth actuation




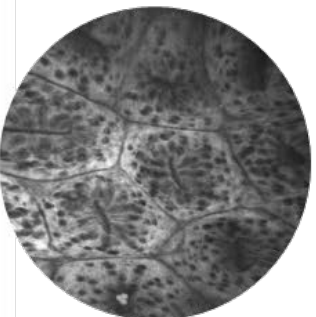
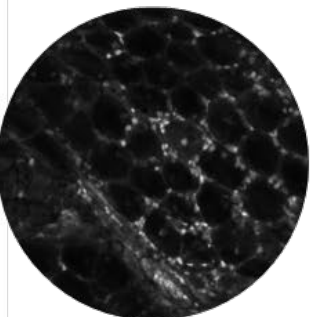
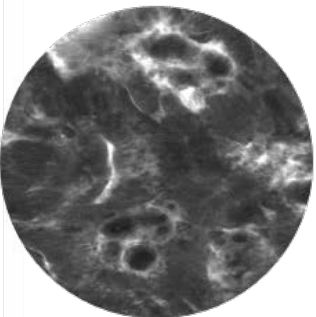
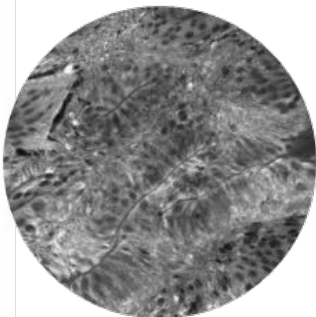
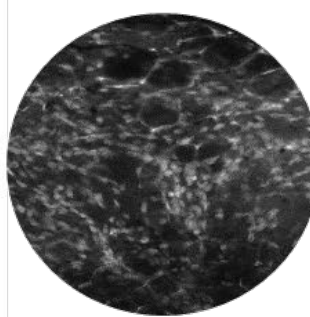
Closest Competitor – Bundled Fibre



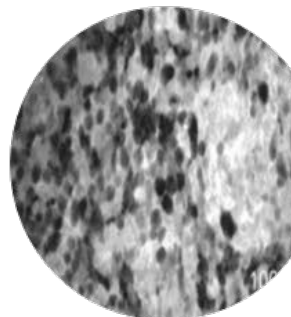
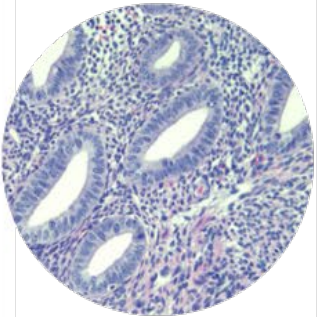
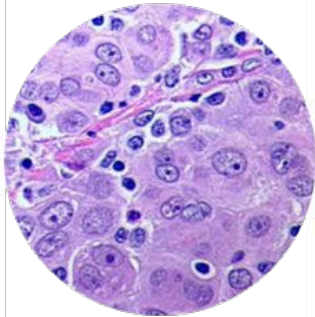
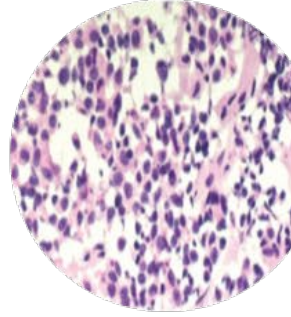


20 µm

- ✗ Bundled fibre, leaving gaps between fibre points with no image capture
- ✗ Image is an array of spots, with critical data missing
- ✗ Image is stitched and requires processing
- ✗ Image is artificially 'smeared', transforming raw pixelated data to appear smooth; Unwanted image artifacts introduced
- ✗ Sub-optimal image sampling
- ✗ No Z-stack capability for image depth actuation

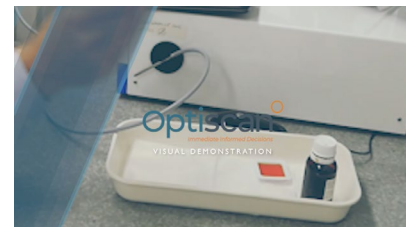
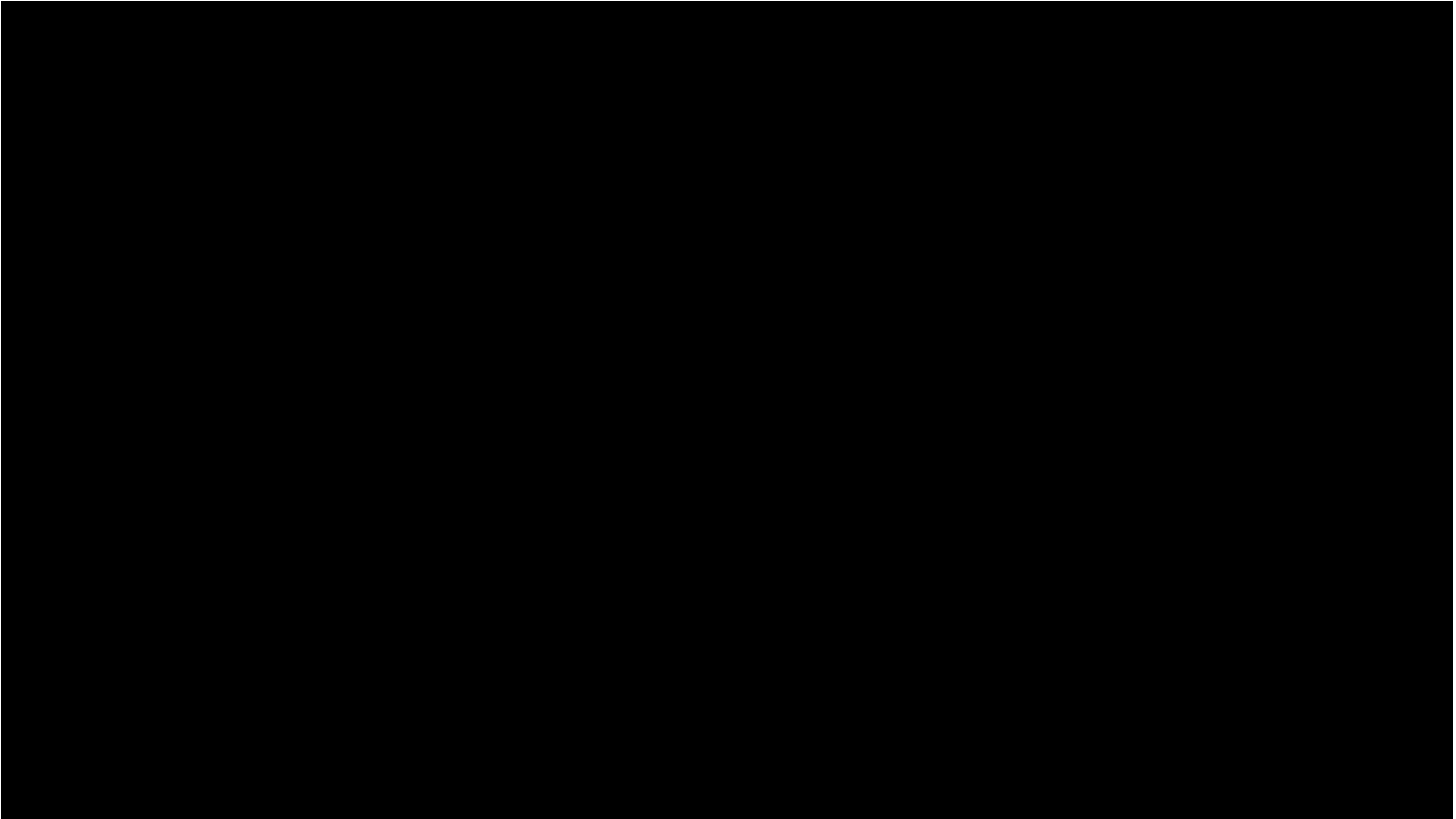
# Proven + Validated Technology

Cancer vs Normal			
	Oesophagus	Colon	Breast
NORMAL			
CANCER			

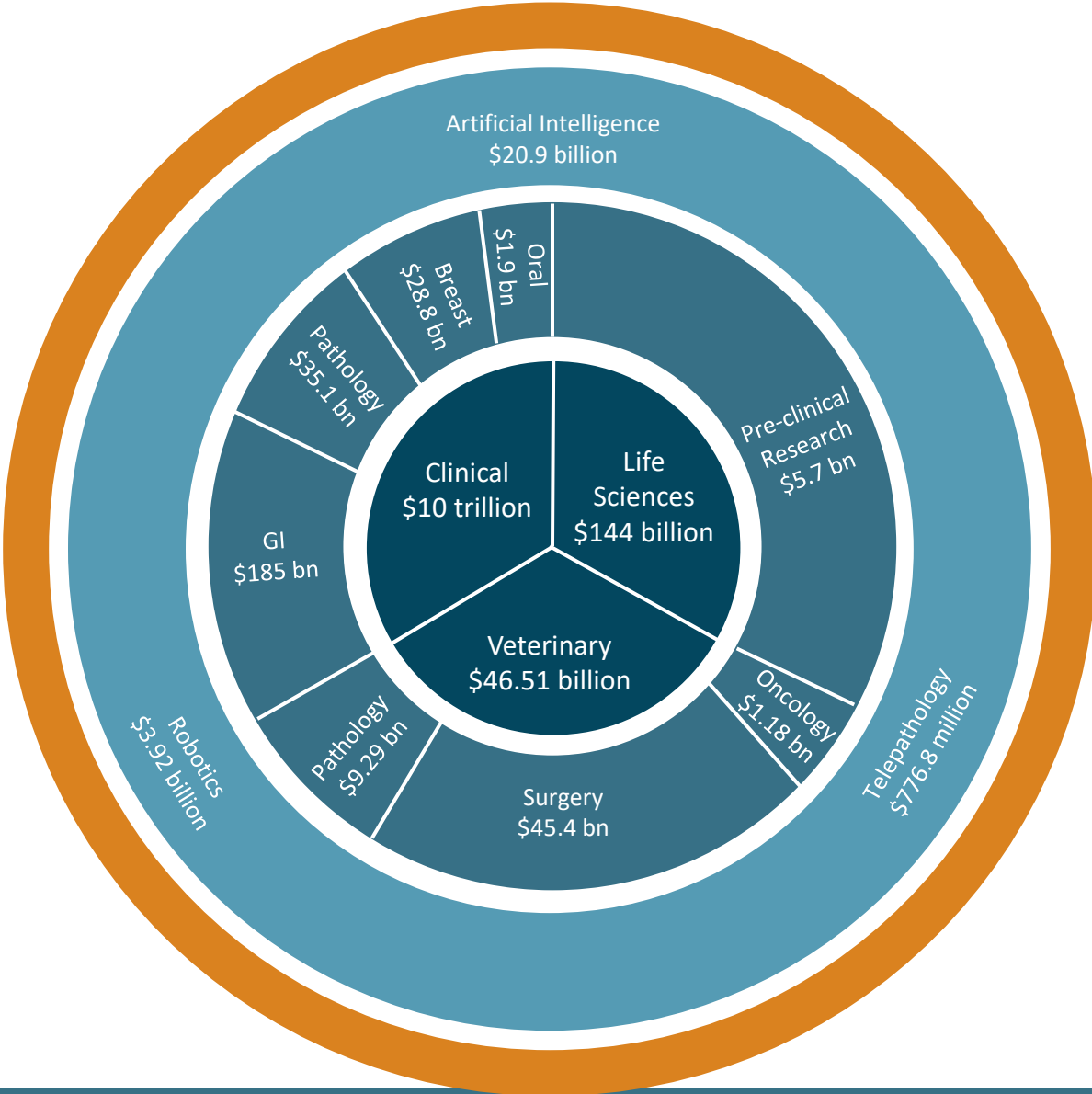
Correlation with Histopathology			
	Endometrium	Mesothelioma	Pituitary Adenoma
OPTISCAN			
HISTOPATHOLOGY			

Tissue Agnostic with Excellent Correlation to Conventional Pathology

# Live Microscopic Imaging

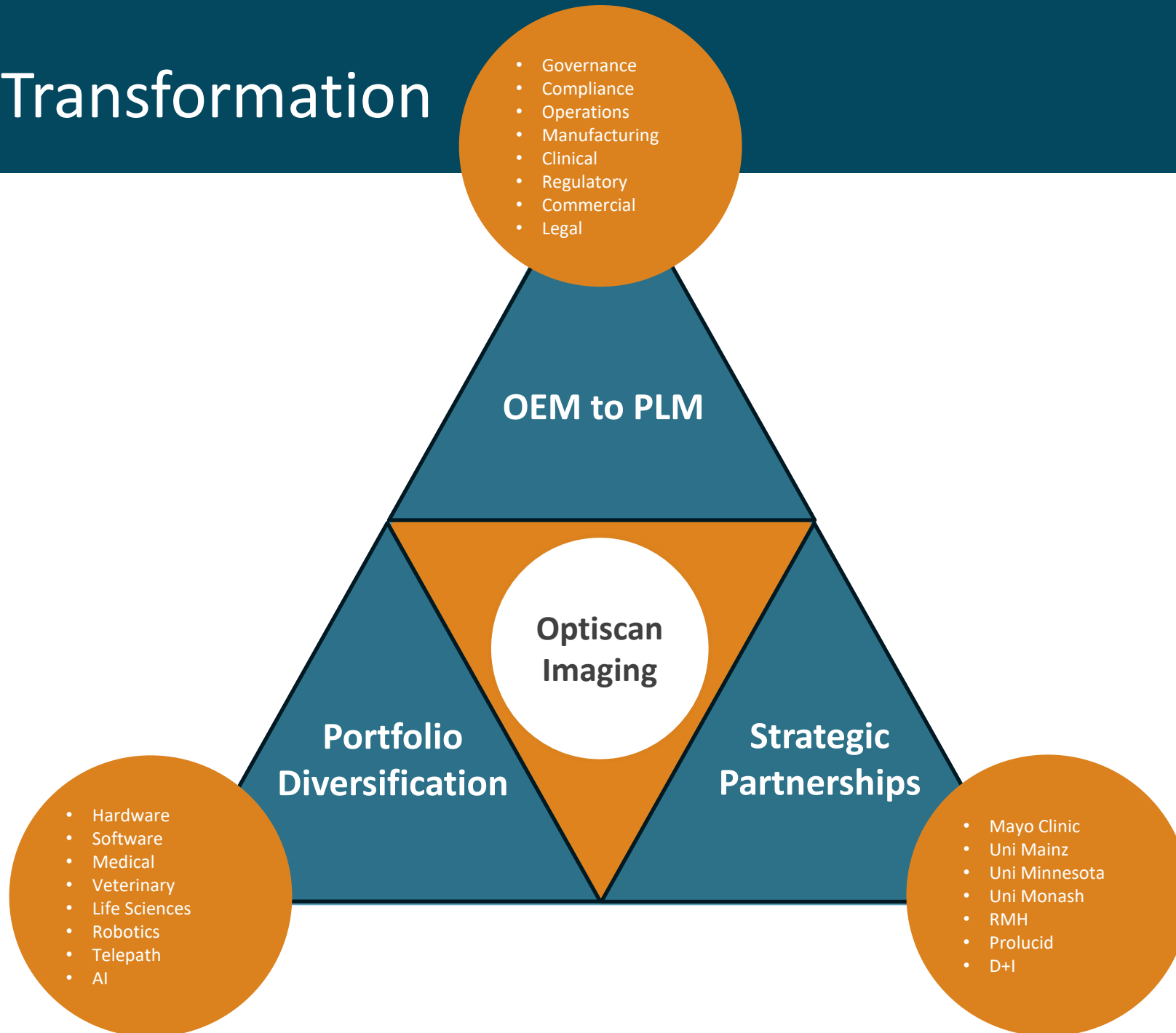


# The Optiscan Opportunity





# Strategic Transformation

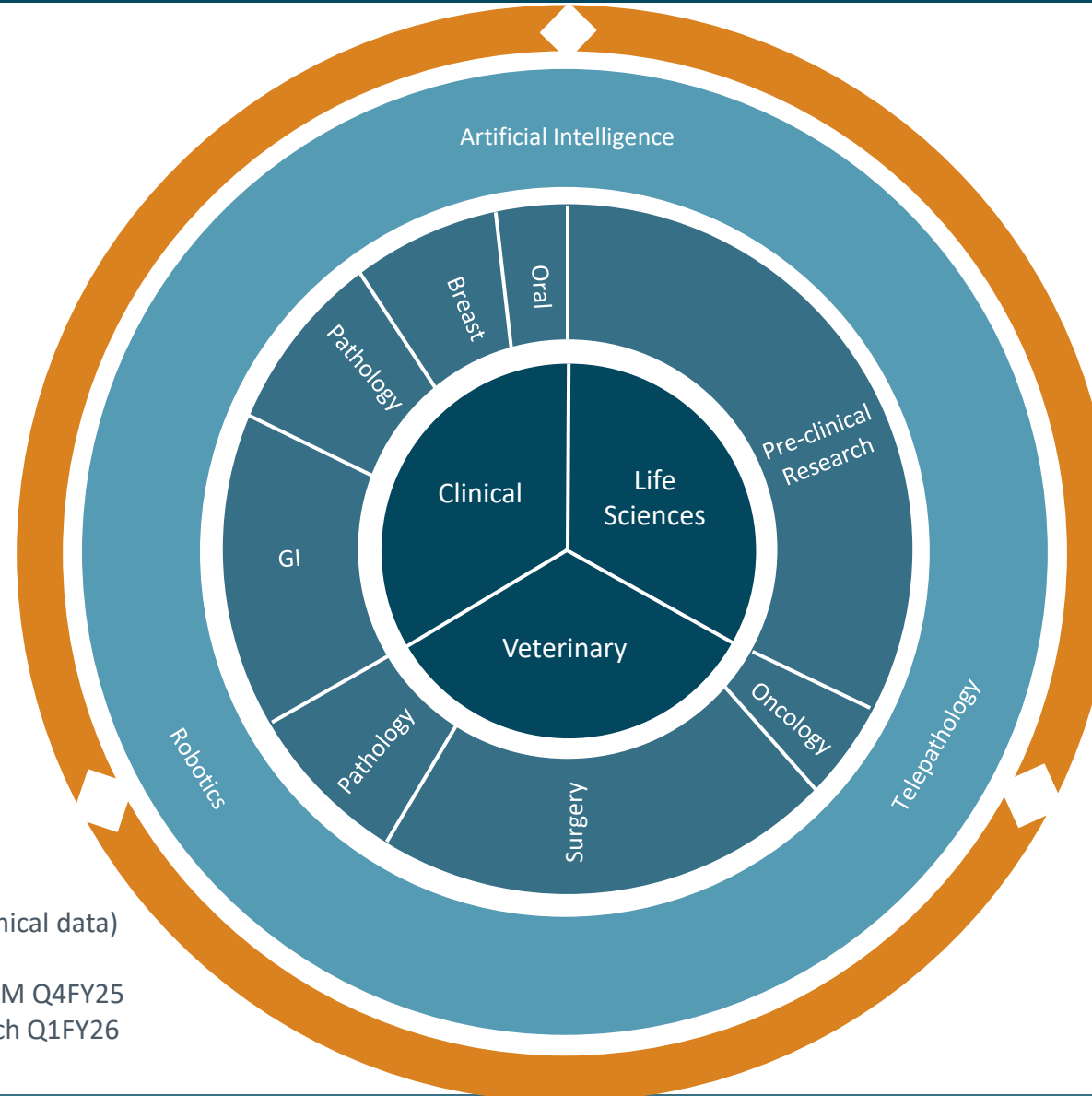




# Progress to date

- InVue® reveal (Surgery)
- Defined regulatory pathway for InVue® Q3FY25
- InForm® reveal (Pathology)
- Defining regulatory pathway for InForm® Q1FY26
- InVivage® compliance update (Oral)
- Flexible scope prototype development (GI)
- Mayo Clinic Agreement (robotics)
- Telepathology platform MVP Q4FY25
- AI development in progress (Prolucid and Monash)
- Actively pursuing surgical and pathology commercial opportunities

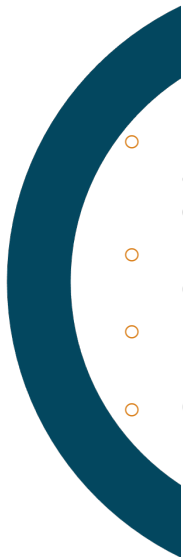
- Uni of Minnesota Agreement (clinical data)
- Veterinary device reveal Q4FY25
- Regulatory submission to FDA CVM Q4FY25
- Projected Veterinary device launch Q1FY26



- Sales & marketing appointments in AU and US
- Outsourced business development in EU
- Renewed distributor agreements in APAC
- ViewnVivo® expanding sales pipeline in US, China, EU
- Actively pursuing life sciences sales opportunities
- Extension into Veterinary research market

# Positioned for Growth

## Phase 1: Core foundation



- Develop core platform and initial product offering
- Patented technology development
- Prove legitimacy of the product
- OEM product provider

1994 - 2021

## Phase 2: Strategic transformation



- Strategic focus
- Optimised operations
- Investment in growth opportunities and markets
- Expanding product portfolio
- Technology commercialization
- Cultivate strategic partnerships
- Establish US operations

2022 - 2026

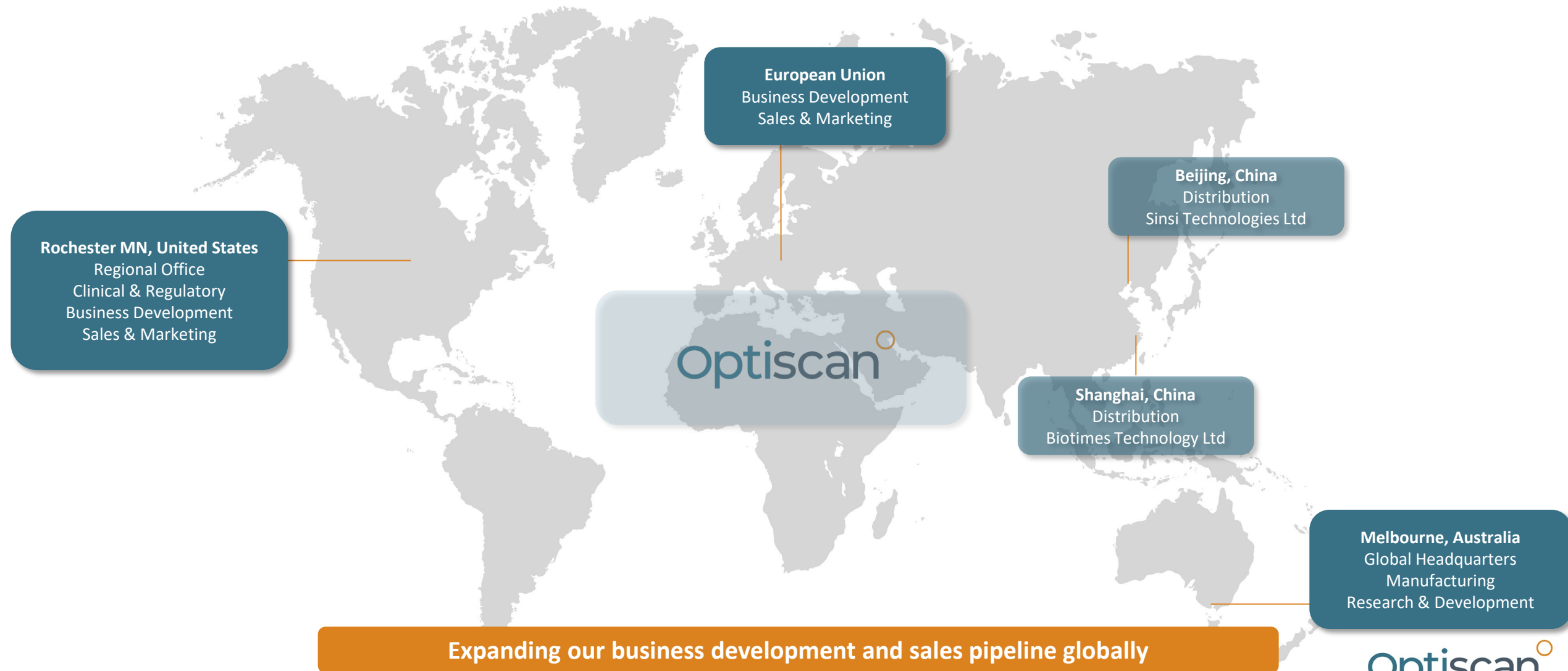
## Phase 3: Strategic growth



- Digital health solutions leader
- Full suite of digital health products
- Clinical devices for Breast, GI, Vet, Robotics
- Pure-play digital medical device company
- Significant market share in digital health sector

2027 +

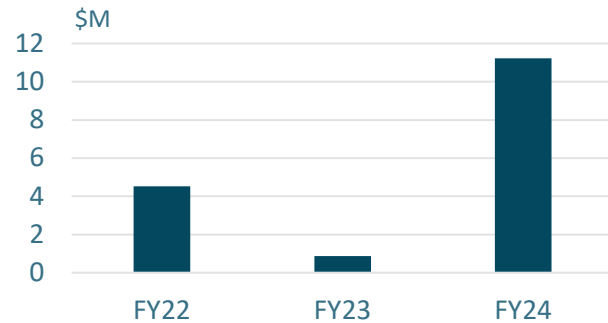
# Growing Footprint & Sales Pipeline



# FY24 Financial Highlights

## Strong capital position and increased income.

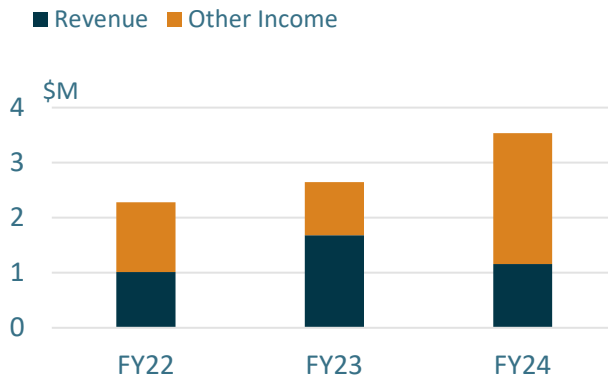
### Cash and Term Deposits



### \$16.7m capital raised to advance multiple R&D projects

- Balance sheet in FY24 remained strong with a cash and term deposit balance of \$11.2m
- Balance as of Feb25 remains strong at \$7.1m
- Significant advancements in R&D have been made to develop new clinical devices and product innovations

### Revenue and Other Income



### FY24 Total Income (Revenue & Other Income) up ~33% on FY23 to \$3.53m

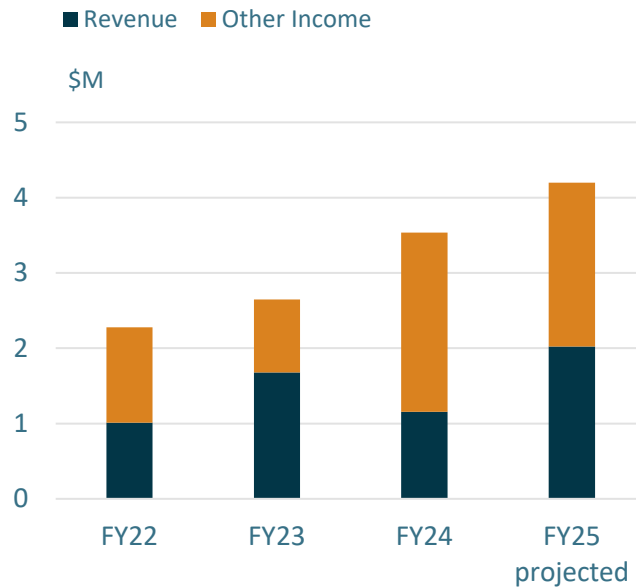
#### Other income

- Non-dilutive funding has increased by more than double to \$2.4m with the successful CRC-P grant funding and higher R&D tax incentive income
- Other income projected to increase, in line with higher R&D activities

# FY25 Market Update

## Projected increased revenue from sales and other income.

### Revenue and Other Income



**FY25 Total Income (Revenue & Other Income) projected to increase up to 20%, approximately \$4.2m from FY24**

#### Revenue from sale of products

- FY25 revenue from ViewnVivo® sales projected to increase by nearly double from FY24
- Increased sales from growing ViewnVivo® pipeline projected for FY26, due to long 12 to 18 months sales cycle
- FY25 sales from to CZM projected to be in line with FY24 outcome

#### Other income

- Non-dilutive funding from CRC-P grant expected to be received over the next 2 years with a total value of approximately \$2m
- Additional \$1m R&D tax incentive income projected over coming years as increased investment is placed in R&D to advance multiple projects locally and overseas

# Diversified Hardware & Software Portfolio

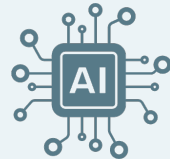
## Clinical Device Family Vision



## Full Suite of Digital Health Assets



Live Streaming  
Telepathology Software &  
Remote Diagnostics



AI Based Software as a  
Medical Device



Biopsy Channel Compatible  
Devices



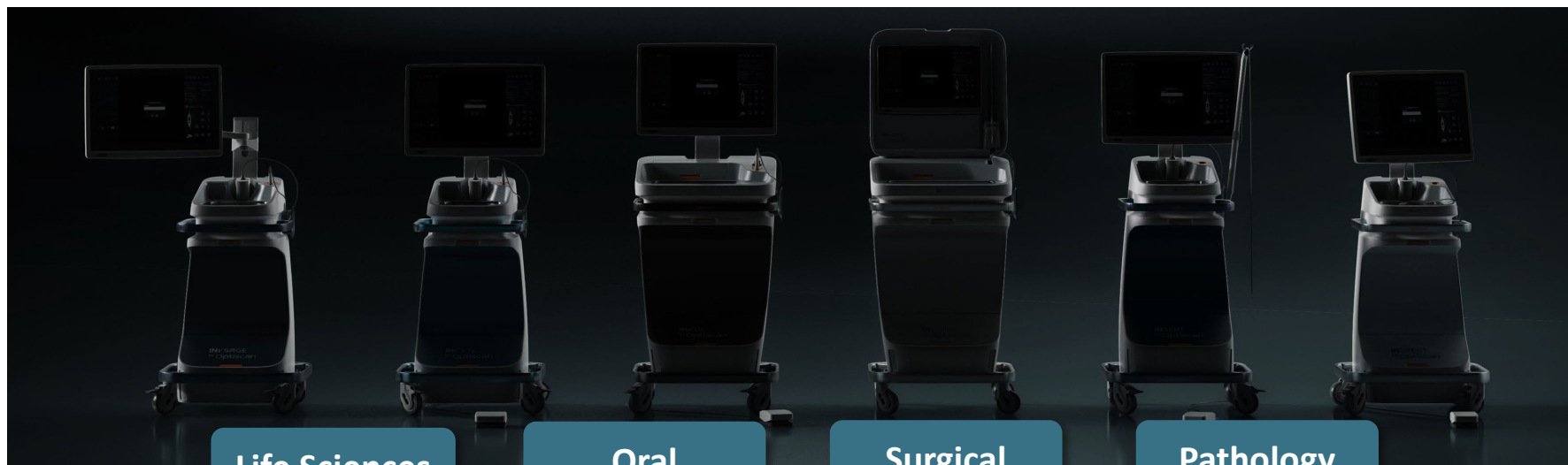
Integration with Robotics  
Systems



Image-guided  
Molecular Surgery

Horizontally and Vertically integrated product range with large addressable markets

# Product Family Vision Brought to Life



Life Sciences

Oral

Surgical

Pathology



 **ViewnVivo**  
by Optiscan<sup>®</sup>



 **InVivage**  
by Optiscan<sup>®</sup>



 **inVue**  
by Optiscan<sup>®</sup>

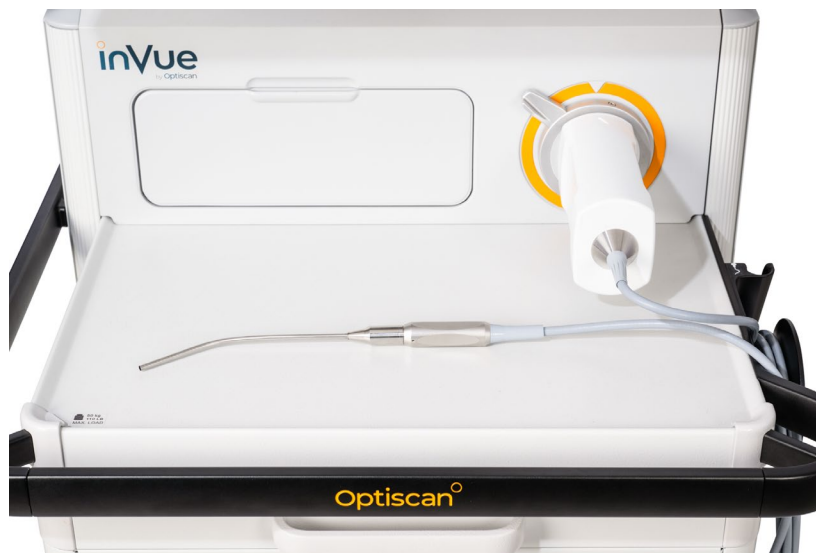


 **INFORM**  
by Optiscan<sup>®</sup>

 **Optiscan**  
Commercial in Confidence



# InVue™



Optiscan<sup>o</sup>

# InForm™



**INFORM**  
by Optiscan<sup>o</sup>

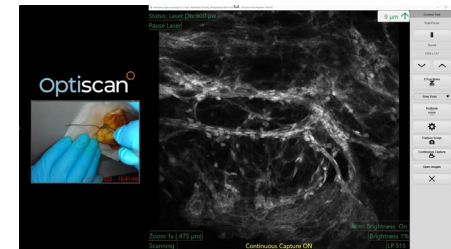
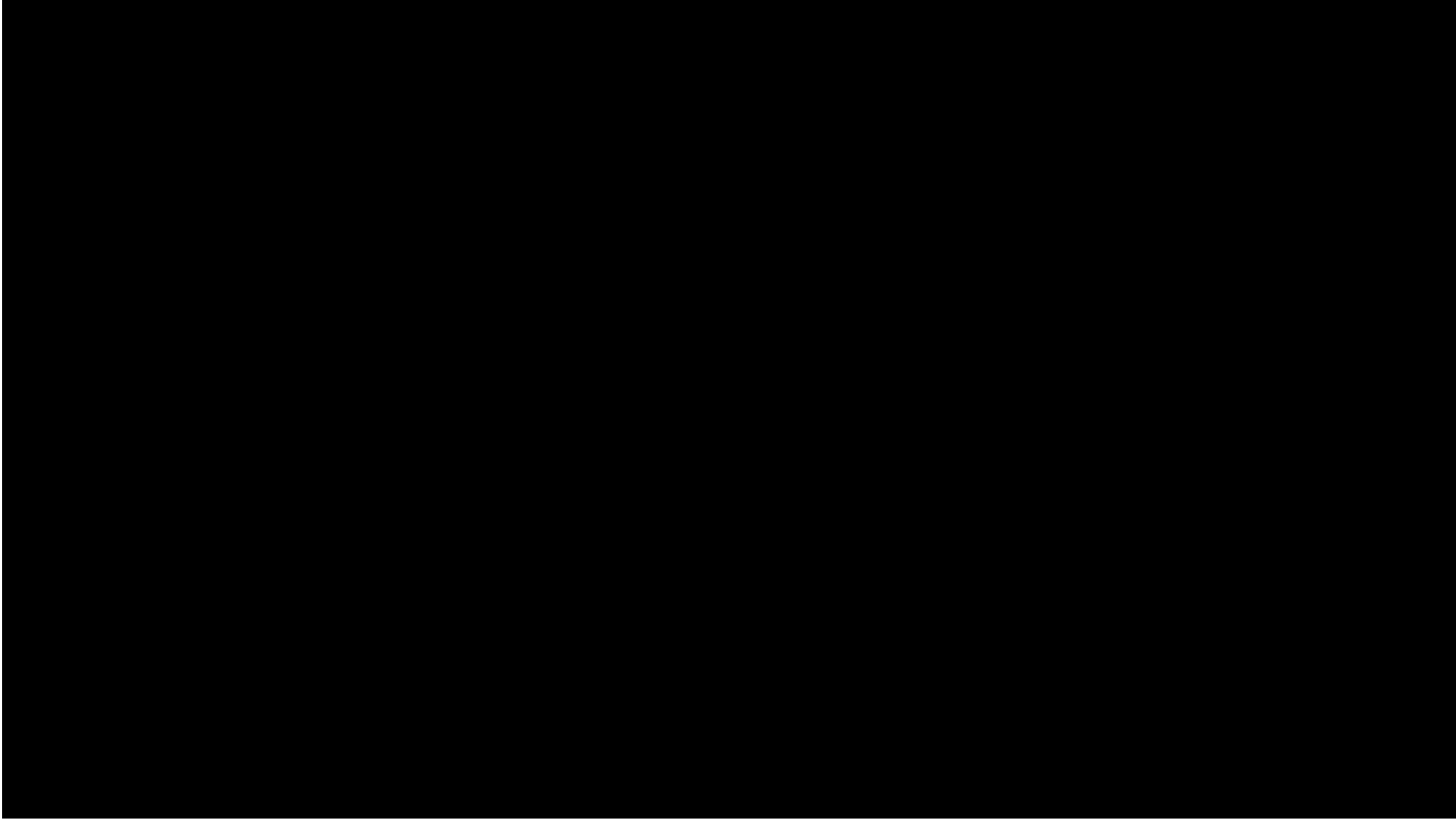
**Optiscan<sup>o</sup>**  
Commercial in Confidence



# InForm™

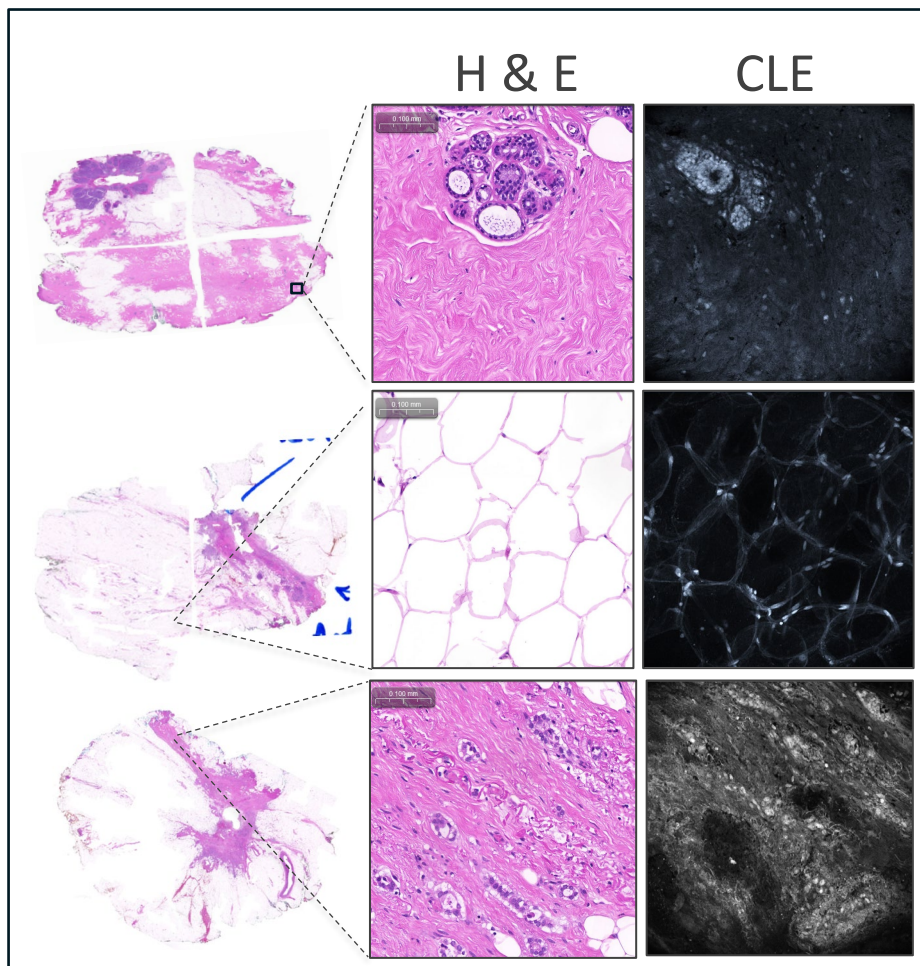


# Breast Cancer Imaging

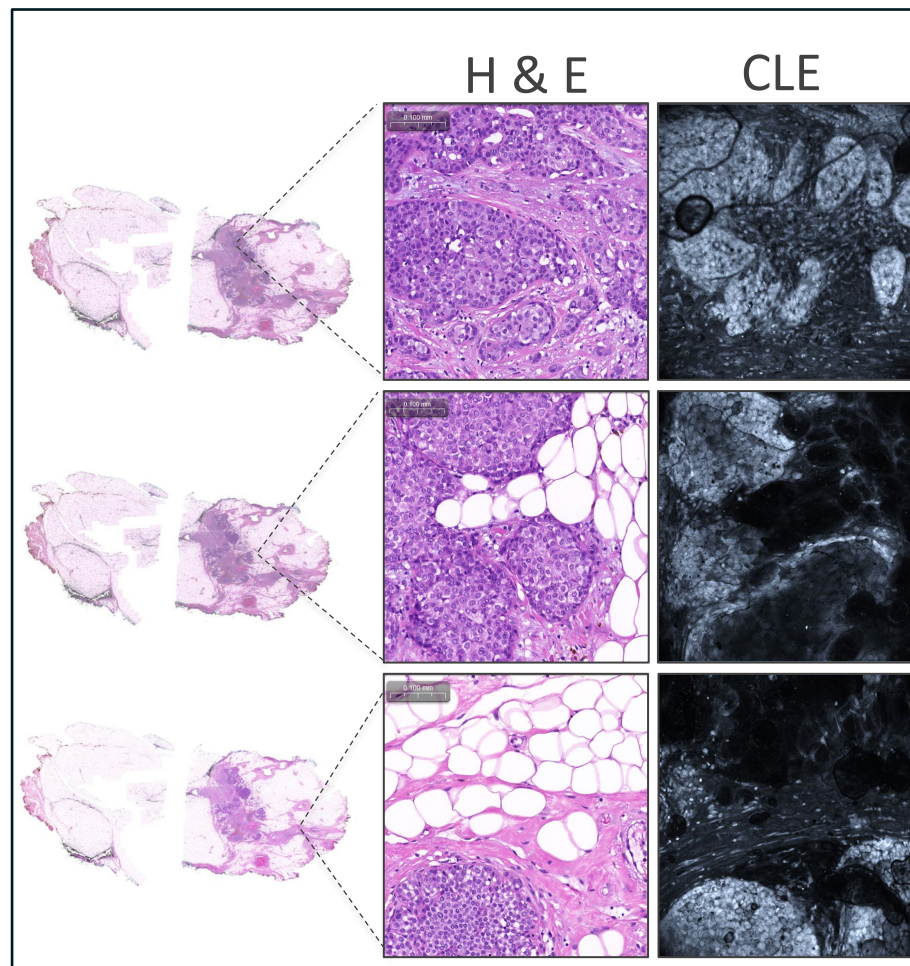


# Breast Imaging

## Normal Breast Tissue

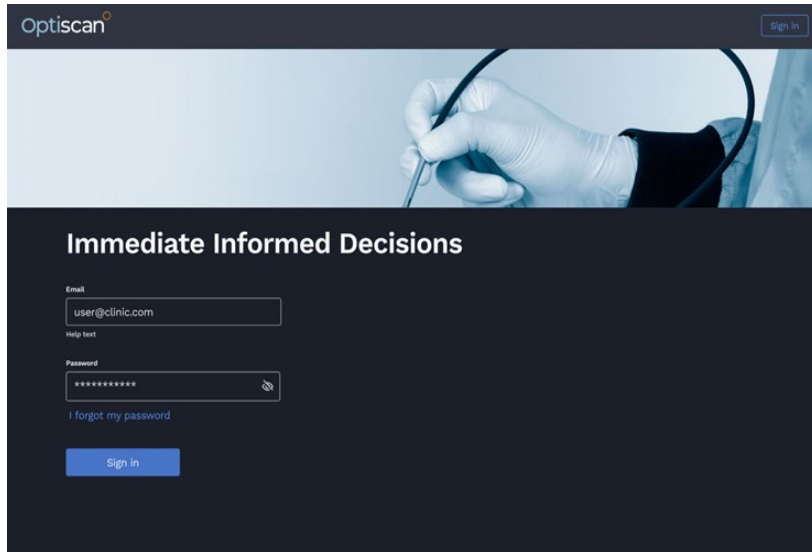


## Invasive Breast Carcinoma





# Telepathology



Optiscan

Sign in

**Immediate Informed Decisions**

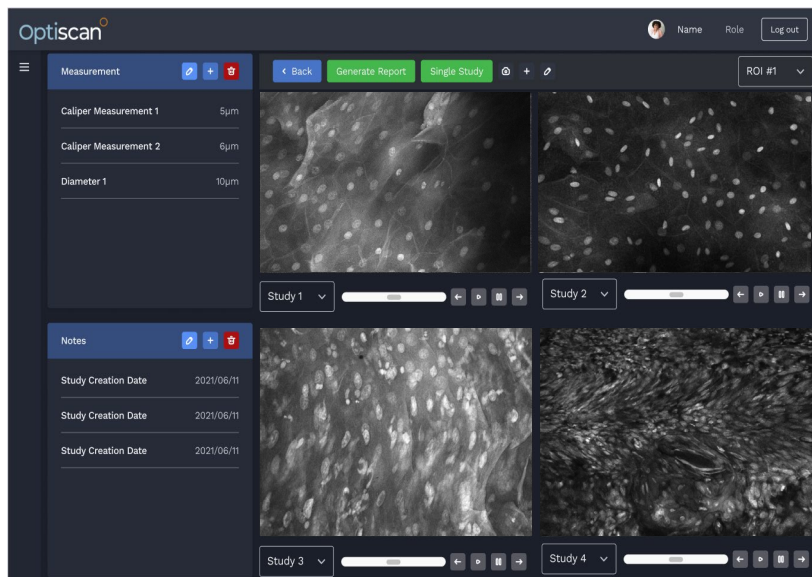
Email  
user@clinic.com

Help text

Password  
\*\*\*\*\*

[I forgot my password](#)

Sign in



Optiscan

Name Role Log out

Measurement

Caliper Measurement 1 5µm

Caliper Measurement 2 6µm

Diameter 1 10µm

Notes

Study Creation Date 2021/06/11

Study Creation Date 2021/06/11

Study Creation Date 2021/06/11

Study 1

Study 2

Study 3

Study 4



First Name

Last Name

Email

Phone

Address

City

State

Zip

Country

Sign up

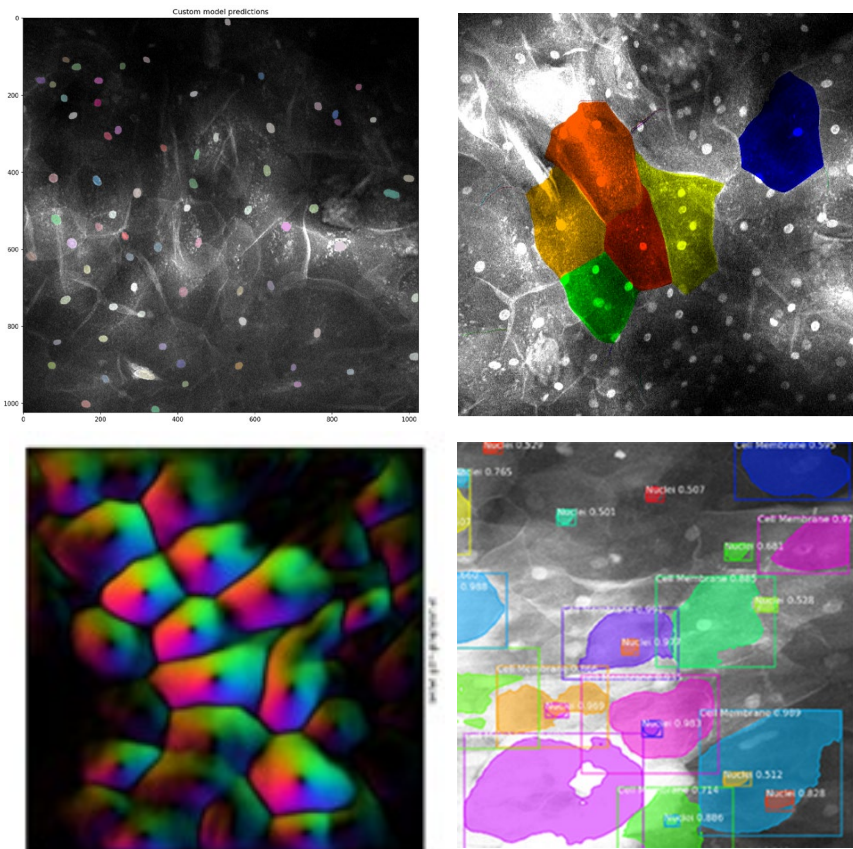
Optiscan

Immediate Informed Decisions

Enabling digital  
pathology for  
anyone, anywhere,  
anytime

- Cloud hosted webapp utilizing microservice based architecture for device management, security, storage, and data processing.
- Custom pathologist web portal interface for data access, real-time telepathology support, historical data review, and reporting.
- Video streaming utilizing various services for real-time remote image viewing.
- MVP achieved.
- SaMD
- SaaS

# AI/ML

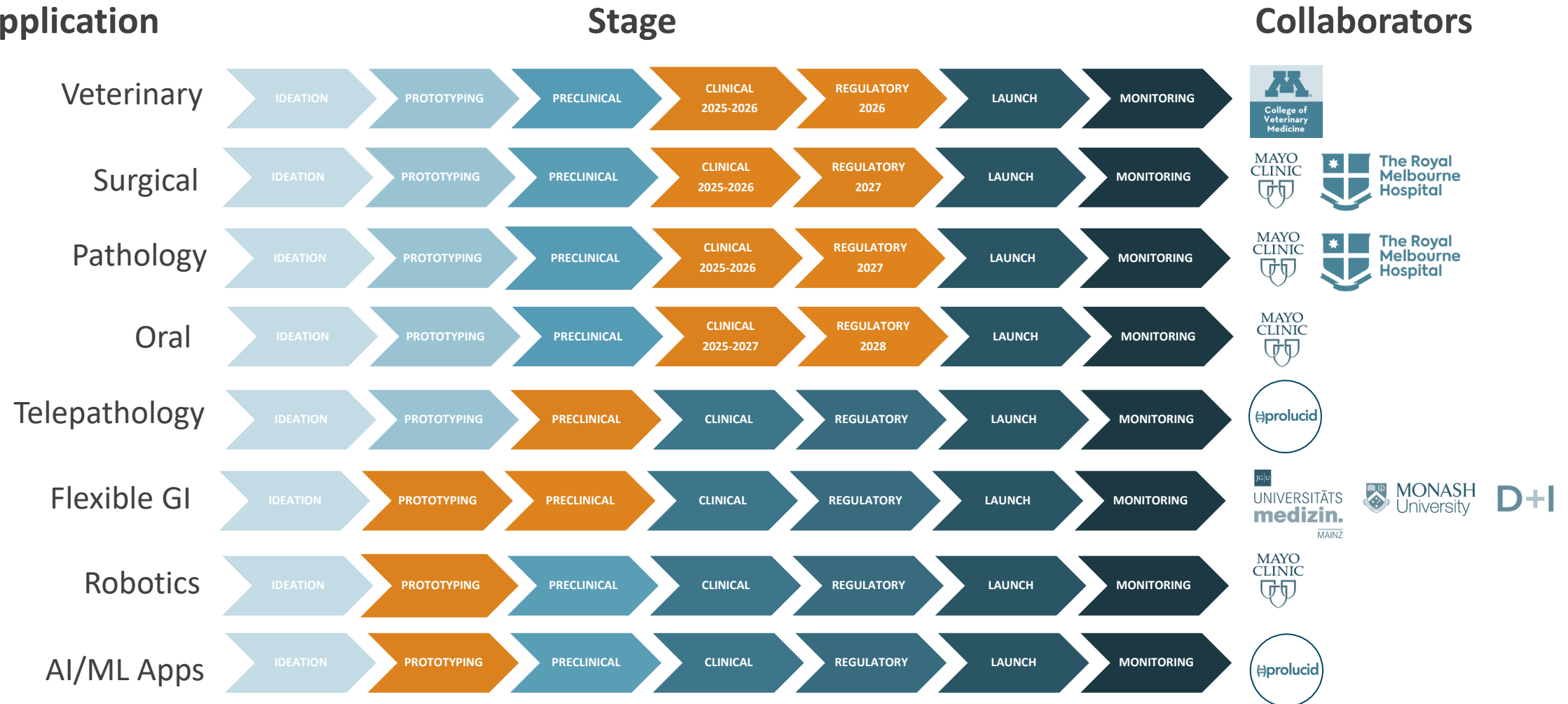


- Machine learning and image processing pipeline running directly on the device to process images in real-time
- Pipeline broken down into multiple ML and traditional computer vision algorithms for:
  - Image pre-processing, filtering, and masking
  - Nuclei extraction
  - Cell boundary segmentation
  - Feature extraction and results interpretation
- Design and Discovery iteration to capture requirements and identify MVP release to prove out functionality and gather early feedback
- Model selection, training, and testing iterations completed to quantify performance of a variety of models on acquired image data
- Pipeline prototyping using images from various dye-stained tissues to quantify capability and outline ML pipeline requirements
- SaMD

Instantaneous diagnostic capability of pre-cancer and cancer with AI solutions



# Product Pipeline - By Development Stage



 Current stage of progress

# Optiscan Investment Opportunity

## Value Proposition

Revolutionary Patent-  
Protected Technology



Versatility of Platform &  
Global Applications



Diversified Hardware &  
Software Offerings



Limitless Growth Potential



## Market Differentiators & Investment Thesis

High Barrier To Entry  
+ Product  
Differentiation



Competitive  
Advantage In Large  
Addressable  
Markets



Scalability +  
Diversification



Revenue + Market  
Capitalization  
Expansion



Recurring Revenue  
Streams + End To  
End Control



Massive Exit  
Potential



# Contact Us



**Dr Camile Farah** MBA, PhD, MAICD, FAIM, FLWA  
**CEO & Managing Director**  
**Optiscan Imaging Ltd (ASX:OIL)**



[ceo@optiscan.com](mailto:ceo@optiscan.com)



[/company/Optiscan](https://www.linkedin.com/company/optiscan)



[www.optiscan.com](http://www.optiscan.com)

Optiscan<sup>o</sup>